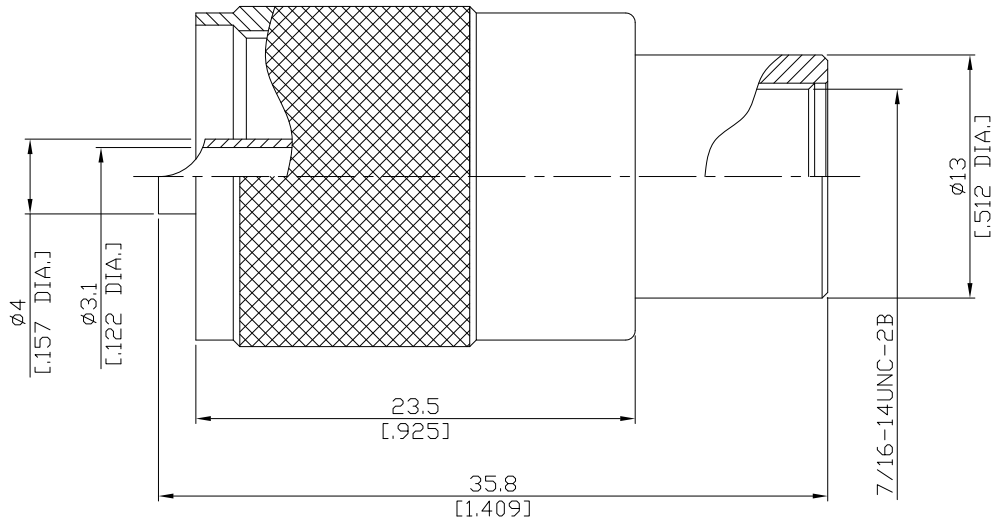


UHF Plug (Male) Connector (PL-259) Solder
for RG8, RG213, LMR-400

UHF1EN0-G213A/133



All dimensions are in mm [inch]

Tolerances according to DIN ISO 2768-mH

Interface

According to IEC 60169-12

Electrical Data

Impedance non-constant
Frequency DC to 300 MHz

Mechanical Data

Coupling mechanisms Screw-lock
Centre contact Solder
Cable entry Screw-in and Solder

Environmental Data

Temperature range -55°C to +149°C
RoHS compliant
REACH compliant

Material And Plating

Connector parts	Material	Plating
Centre contact	Brass	Gold plating(Nickel underplated)
Body	Brass	Nickel
Insulator	PTFE	
Coupling nut	Brass	Nickel

Suitable Cables

RG8, RG213, LMR-400

Packing

Single or 100