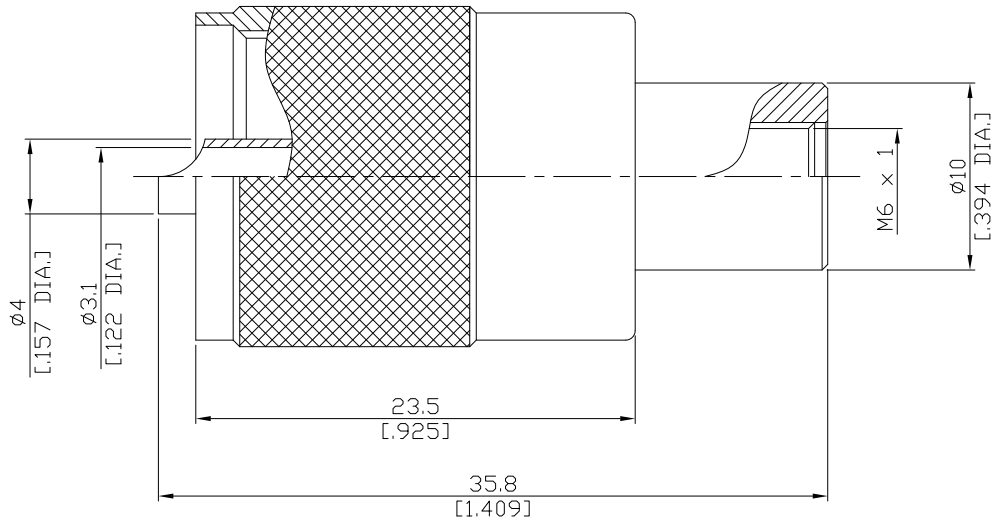


UHF Plug (Male) Connector (PL-259) Solder for  
RG58, RG142, RG223, RG400, RG303, LMR-195

UHF1EN0-G058A/133



All dimensions are in mm [inch]

Tolerances according to DIN ISO 2768-mH

#### Interface

According to IEC 60169-12

#### Electrical Data

Impedance non-constant  
Frequency DC to 300 MHz

#### Mechanical Data

Coupling mechanisms Screw-lock  
Centre contact Solder  
Cable entry Screw-in and Solder

#### Environmental Data

Temperature range -55°C to +149°C  
RoHS compliant  
REACH compliant

#### Material And Plating

Connector parts	Material	Plating
Centre contact	Brass	Gold plating(Nickel underplated)
Body	Brass	Nickel
Insulator	PTFE	
Coupling nut	Brass	Nickel

#### Suitable Cables

RG58, RG142, RG223, RG400, RG303, LMR-195

#### Packing

Single or 100