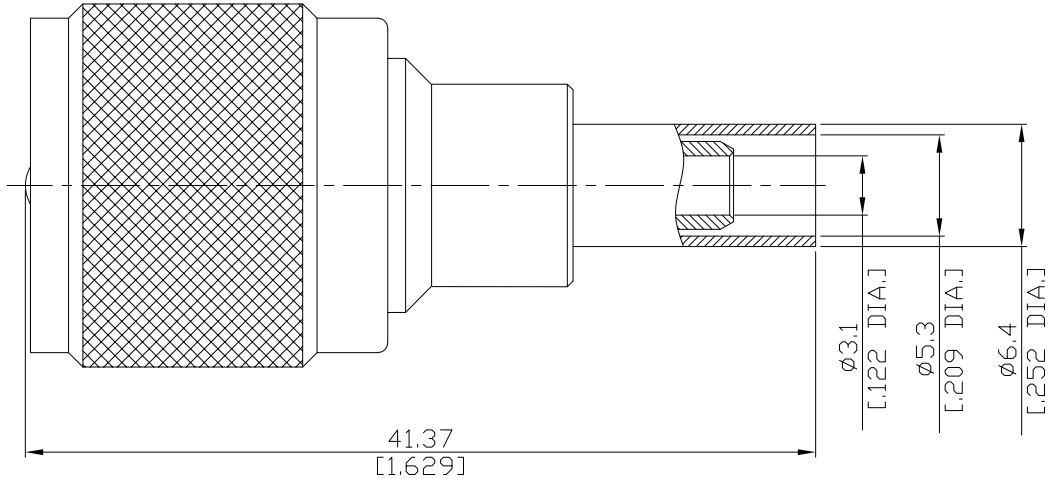


UHF Straight Cable Plug

UHF1CN0-G058A/144



All dimensions are in mm [inch]

Tolerances according to DIN ISO 2768-mH

**Interface**

According to IEC 60169-12

**Electrical Data**

Impedance non-constant  
 Frequency DC to 300 MHz  
 VSWR (Return Loss)  $\leq 1.22$  ( $\geq 20$ dB)  
 Insertion Loss  $\leq 0.05$  dB

- Limitations are possible due to the used cable type and manufacturing process -

**Mechanical Data**

Coupling mechanisms Screw-lock  
 Centre contact Soldered or Crimped  
 Cable entry Crimped

**Environmental Data**

Temperature range  $-55^{\circ}\text{C}$  to  $+149^{\circ}\text{C}$   
 RoHS compliant

**Material And Plating**

Connector parts	Material	Plating
Centre contact	Brass	Gold plating(Nickel underplated)
Body	Brass	Copper-Tin-Zinc Alloy
Insulator	PTFE	
Coupling nut	Brass	Copper-Tin-Zinc Alloy
Crimp ferrules	Brass	Copper-Tin-Zinc Alloy

**Suitable Cables**

RG 58, RG 58A, RG 58C, RG 141, RG 303, BELDEN 7806A, BELDEN 9907, LMR 195, RNL-195

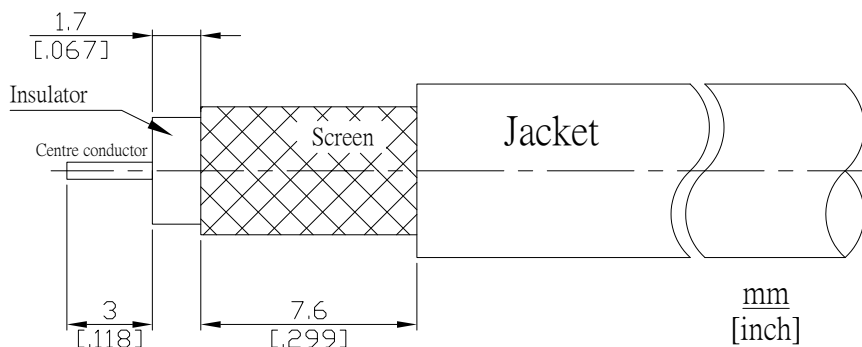
**Packing**

Single, 5-pack, or 100

UHF Straight Cable Plug

UHF1CN0-G058A/144

**Recommended Cable Stripping Dimensions**



**Crimp Dimensions [HEX]**

Crimp ferrule	5.41 mm [.213 inch]
Centre contact	1.73 mm [.068 inch]