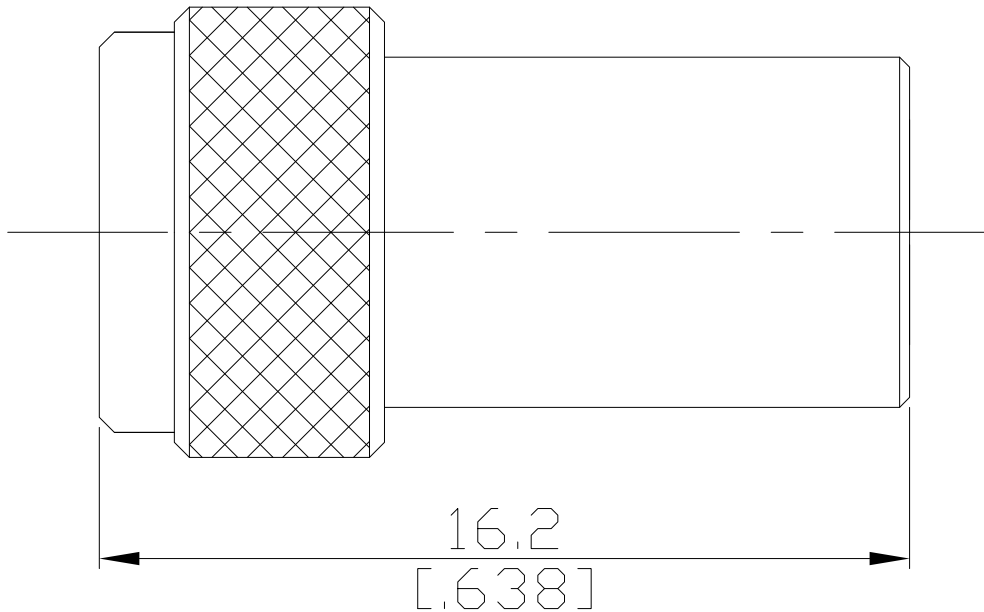


SMA Snap-On Terminations Plug

T-AQ15A-18G2W/H11



All dimensions are in mm [inch]

Tolerances according to DIN ISO 2768-mH

**Interface**

According to IEC 60169-15; MIL-C-39012; MIL-STD-348A/310

**Electrical Data**

Impedance 50 Ω  
 Interface frequency max. DC to 18 GHz  
 VSWR (Return loss) ≤ 1.20 (≥ 20.83 dB)  
 Power rating (Watt) 2 W

**Mechanical Data**

Coupling mechanisms Snap-on  
 Weight 0.0053 kg

**Environmental Data**

Temperature range -55°C to +125°C  
 RoHS compliant

**Material And Plating**

Connector parts	Material	Plating
Centre contact	Phosphor Bronze	Gold plating(Nickel underplated)
Body	Brass	Gold plating(Nickel underplated)
Insulator	PTFE	
Gasket	Silicone Rubber	
Coupling nut	Brass	Gold plating(Nickel underplated)

**Packing**

Single or 100