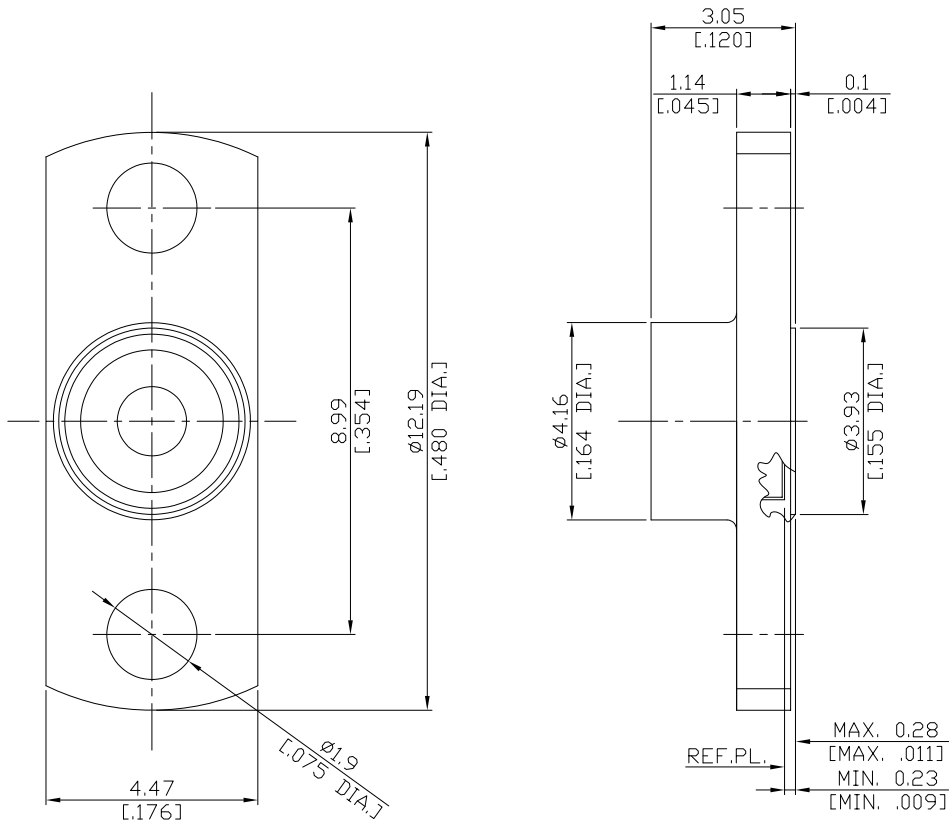


SMP Plug Full Detent
2-Hole Flange Mount (Shroud without Pin)

SMP1GTA50FD-0305A/-X



All dimensions are in mm [inch]

Tolerances according to DIN ISO 2768-mH

Interface

Derived from MIL-STD-348A/326.2 (Full Detent)

Mechanical Data

Coupling mechanisms Snap-on

Environmental Data

Temperature range -65°C to +165°C
RoHS compliant

Material And Plating

Piece Parts	Material	Plating
Body	Stainless Steel	Passivated

Packing

Single or 100

Related Documents

MD164