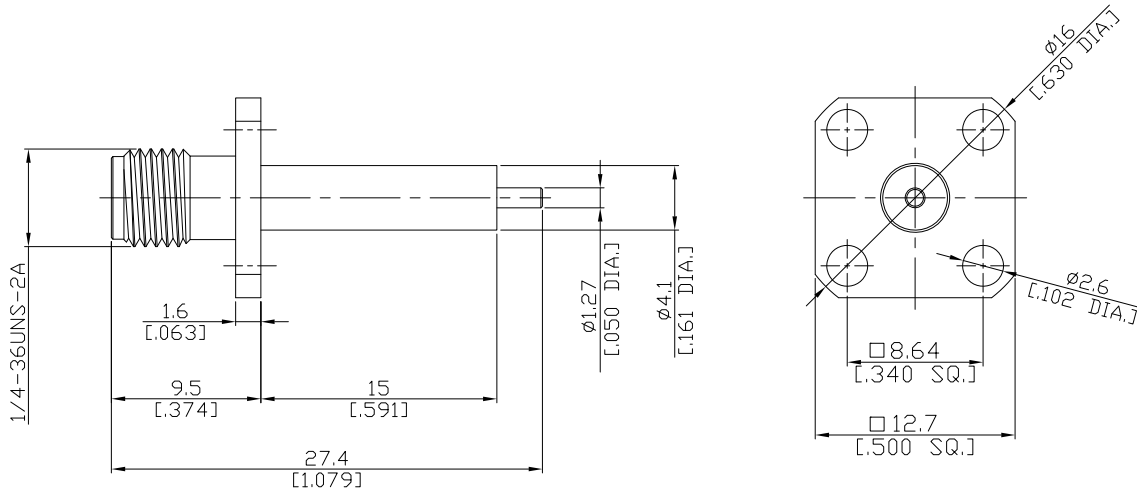


SMA Straight 4 Hole Panel Receptacle
Jack, Coaxial End

SMA2GFA50-2740A/9X



All dimensions are in mm [inch]
Tolerances according to DIN ISO 2768-mH

Interface

According to IEC 60169-15; MIL-C-39012; MIL-STD-348A/310

Electrical Data

Impedance 50 Ω
Frequency DC to 18 GHz
VSWR (Return Loss) ≤ 1.14 (≥ 23.69 dB)
Insertion Loss ≤ 0.03 x √F (GHz) dB

Mechanical Data

Coupling mechanisms Screw-lock
Weight 0.0031 kg

Environmental Data

Temperature range -65°C to +165°C
RoHS compliant

Material And Plating

Piece Parts	Material	Plating
Centre contact	Beryllium Copper	Gold plating(Nickel underplated)
Body	Stainless Steel	Passivated
Insulator	PTFE	

Packing

Single or 100

Related Document

Mounting Dimension MD71