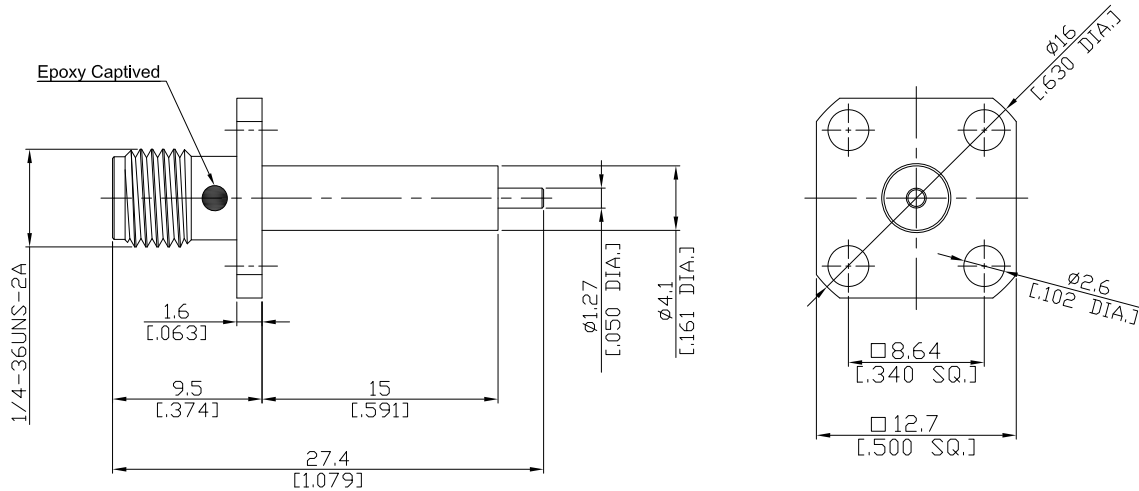


## SMA Straight Panel Receptacle Jack Coaxial End

## SMA2GFA50-2740A-EC/9X



All dimensions are in mm [inch]  
Tolerances according to DIN ISO 2768-mH

### Interface

According to MIL-C-39012; MIL-STD-348A/310

### Electrical Data

Impedance 50 Ω  
Frequency DC to 18 GHz  
VSWR (Return Loss) ≤ 1.14 (≥ 23.69 dB)  
Insertion Loss ≤ 0.03 x √F (GHz) dB

### Mechanical Data

Coupling mechanisms Screw-lock  
Weight 0.0031 kg

### Environmental Data

Temperature range -65°C to +165°C  
RoHS compliant

### Material And Plating

Piece Parts	Material	Plating
Centre contact	Beryllium Copper	Gold plating(Nickel underplated)
Body	Stainless Steel	Passivated
Insulator	PTFE	

### Packing

Single or 100

### Related Document

Mounting Dimension MD71