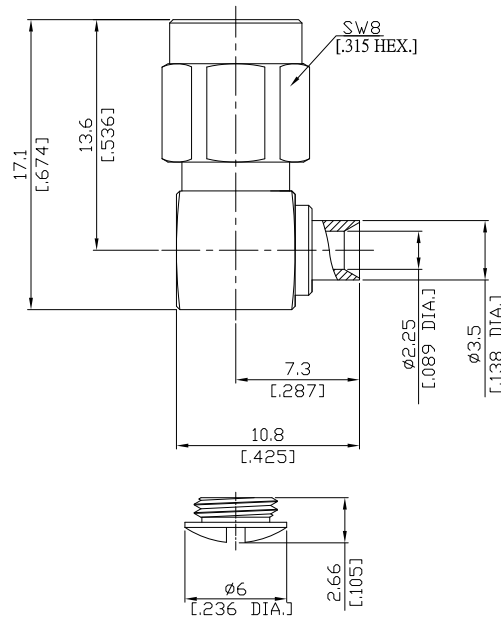


SMA Right Angle Cable Plug

SMA1E59-0085A/11X



All dimensions are in mm [inch]

Tolerances according to DIN ISO 2768- mH

Interface

According to IEC 60169-15; MIL-C-39012; MIL-STD-348A/310

Electrical Data

Impedance 50 Ω
 Frequency DC to 12.4 GHz
 VSWR $\leq 1.05 + 0.01 \times f$ [GHz]
 Insertion Loss $\leq 0.04 \times \sqrt{f}$ (GHz) dB

- Limitations are possible due to the used cable type -

Mechanical Data

Coupling mechanisms Screw-lock
 Centre contact Soldered
 Cable entry Soldered

Environmental Data

Temperature range -65°C to +165°C
 RoHS compliant

Material And Plating

| Connector parts | Material | Plating |
|-----------------|-----------------|----------------------------------|
| Centre contact | Brass | Gold plating(Nickel underplated) |
| Body | Brass | Gold plating(Nickel underplated) |
| Insulator | PTFE | |
| Gasket | Silicone Rubber | |
| Coupling nut | Stainless Steel | Passivated |

Suitable Cables

RSR-086, RSF-086, RSF-086-FEP, RSF-086-PVC, RG-405, BELDEN 1671A, BELDEN 1671J

Packing

Single or 100