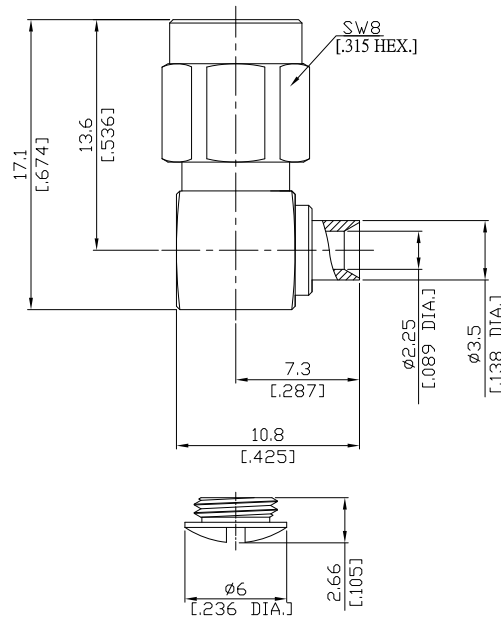


SMA Right Angle Cable Plug

SMA1E59-0085A/111



All dimensions are in mm [inch]

Tolerances according to DIN ISO 2768- mH

**Interface**

According to IEC 60169-15; MIL-C-39012; MIL-STD-348A/310

**Electrical Data**

Impedance 50 Ω  
 Frequency DC to 12.4 GHz  
 VSWR  $\leq 1.05 + 0.01 \times f$  [GHz]  
 Insertion Loss  $\leq 0.04 \times \sqrt{f}$  (GHz) dB

- Limitations are possible due to the used cable type -

**Mechanical Data**

Coupling mechanisms Screw-lock  
 Centre contact Soldered  
 Cable entry Soldered

**Environmental Data**

Temperature range -65°C to +165°C  
 RoHS compliant

**Material And Plating**

Connector parts	Material	Plating
Centre contact	Brass	Gold plating(Nickel underplated)
Body	Brass	Gold plating(Nickel underplated)
Insulator	PTFE	
Gasket	Silicone Rubber	
Coupling nut	Brass	Gold plating(Nickel underplated)

**Suitable Cables**

RSR-086, RSF-086, RSF-086-FEP, RSF-086-PVC, RG-405, BELDEN 1671A, BELDEN 1671J

**Packing**

Single or 100