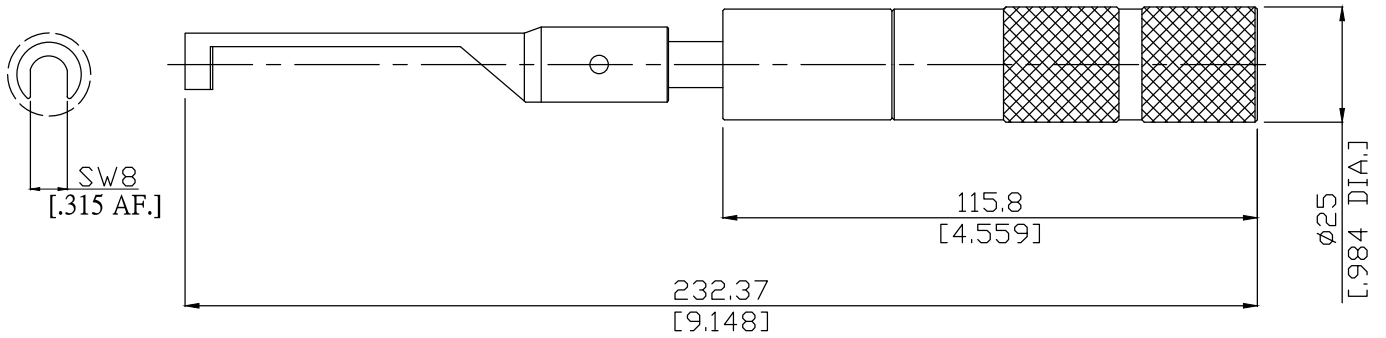


**Torque Wrench Screwdriver**  
**SMA Brass**
**RN-RTW-SD-8-5**


All dimensions are in mm [inch]  
Tolerances according to DIN ISO 2768-mH

**Suitable connector**

SMA Brass

**Material And Plating**

| Tooling parts | Material   | Plating    |
|---------------|------------|------------|
| Spanner       | Tool Steel | Passivated |
| Handle        | Aluminum   | Anodized   |

**Mechanical data**

|                    |                    |
|--------------------|--------------------|
| Width across flats | 8 mm [5/16inch]    |
| Torque setting     | 5 lb-in [0.56 Nm ] |

**Packing**

1 Pcs