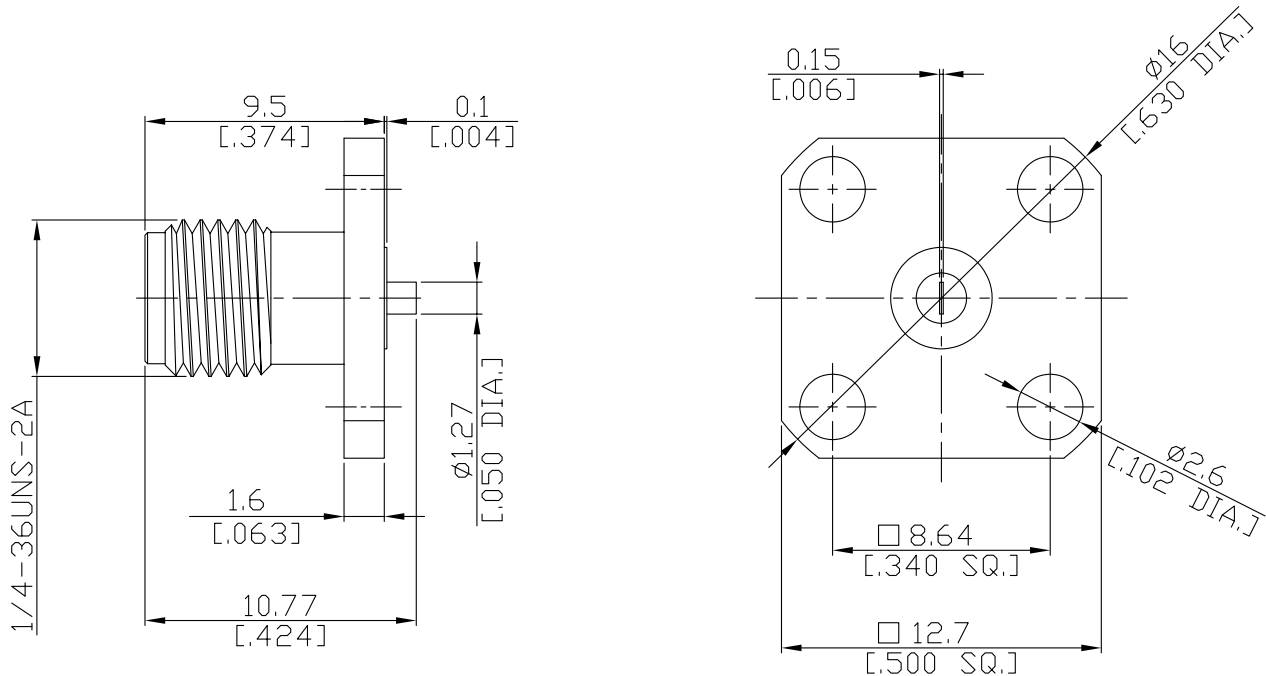


Precision SMA Straight Panel Receptacle
Jack (Flat End), DC-27 GHz

PCA2GFD50-1067A/9X



All dimensions are in mm [inch]

Tolerances according to DIN ISO 2768-mH

Interface

According to IEC 60169-15; MIL-STD-348B/310

Electrical Data

Impedance 50 Ω
 Frequency DC to 27 GHz
 VSWR (Return Loss) ≤ 1.15 (≥ 23.13 dB)
 Insertion Loss ≤ 0.05 x √F (GHz) dB

- Electrical performance guaranteed for connector only -

Mechanical Data

Coupling mechanisms Screw-lock
 Weight N/A

Environmental Data

Temperature range -65°C to +165°C
 RoHS compliant

Material And Plating

Piece Parts	Material	Plating
Centre contact	Beryllium Copper	Gold plating(Nickel underplated)
Body	Stainless Steel	Passivated
Insulator	PTFE	

Packing

Single or 100