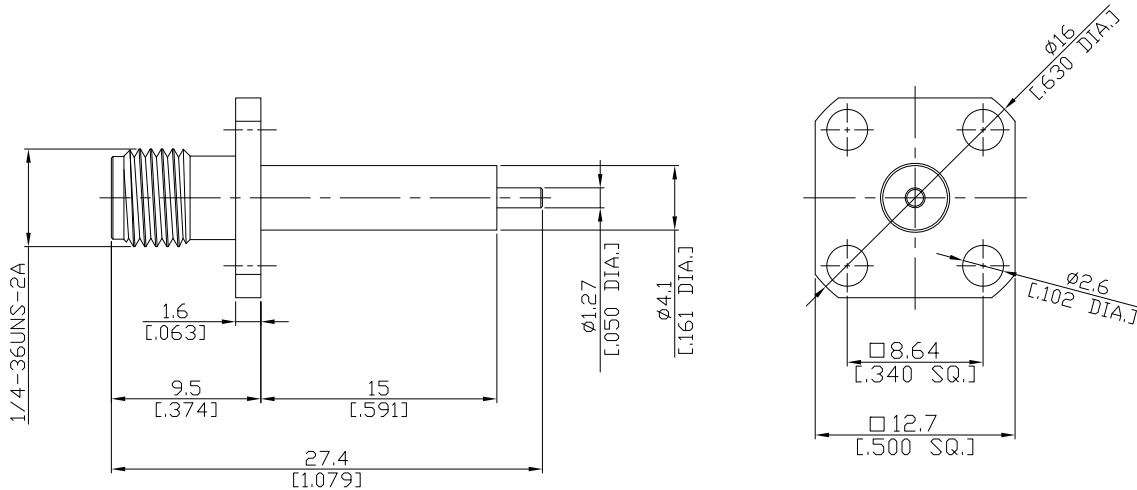


Precision SMA Straight 4 Hole Panel  
Receptacle Jack (Female), Coaxial End

PCA2GFA50-2740A/9X



All dimensions are in mm [inch]  
Tolerances according to DIN ISO 2768-mH

**Interface**

According to IEC 60169-15; MIL-STD-348B/310

**Electrical Data**

Impedance 50 Ω  
Frequency DC to 26.5 GHz  
VSWR (Return Loss) ≤ 1.20 (≥ 20.83 dB)  
Insertion Loss ≤ 0.05 x √F (GHz) dB

**Mechanical Data**

Coupling mechanisms Screw-lock  
Weight N/A

**Environmental Data**

Temperature range -55°C to +165°C  
RoHS compliant

**Material And Plating**

Piece Parts	Material	Plating
Centre contact	Beryllium Copper	Gold plating(Nickel underplated)
Body	Stainless Steel	Passivated
Insulator	PTFE/PEI	

**Packing**

Single or 100

**Related Document**

Mounting Dimension MD71