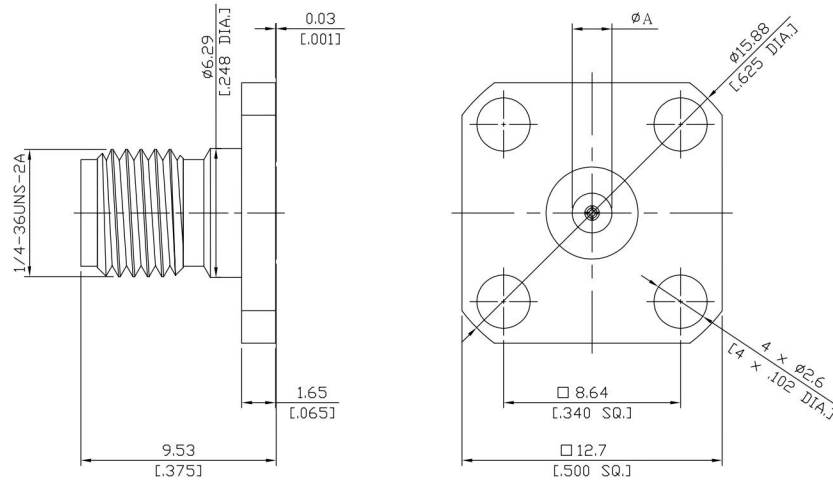




Precision SMA  
Straight Field Replaceable Jack

PCA2BF50-0018A/9X



Rosnol P/N	Pin Size	Max. Pin Depth	$\phi A$
PCA2BF50-0036A/9X	0.91mm [.036"]	2.54mm [.100"]	3.91mm [.1540"]
PCA2BF50-0020A/9X	0.51mm [.020"]	2.54mm [.100"]	2.65mm [.1045"]
PCA2BF50-0018A/9X	0.46mm [.018"]	2.54mm [.100"]	2.59mm [.1020"]
PCA2BF50-0015A/9X	0.38mm [.015"]	2.54mm [.100"]	1.94mm [.0765"]
PCA2BF50-0012A/9X	0.30mm [.012"]	1.91mm [.075"]	1.94mm [.0765"]
PCA2BF50-0009A/9X	0.23mm [.009"]	1.65mm [.065"]	1.53mm [.0602"]

All dimensions are in mm [inch]

Tolerances according to DIN ISO 2768-mH

**Interface**

According to IEC 60169-15; MIL-C-39012; MIL-STD-348A/310

**Electrical Data**

Impedance 50  $\Omega$   
 Frequency DC to 27 GHz  
 VSWR (Return loss) DC to 18 GHz:  $\leq 1.10$  ( $\geq 26.44$  dB) 18 to 27 GHz:  $\leq 1.15$  ( $\geq 23.13$  dB)

**Mechanical Data**

Coupling mechanisms Screw-lock  
 Weight N/A  
 Accept Pin 0.46 mm (.018 inch)

**Environmental Data**

Temperature range -65°C to +165°C  
 RoHS compliant

**Material And Plating**

Piece Parts	Material	Plating
Centre contact	Beryllium Copper	Gold plating(Nickel underplated)
Body	Stainless Steel	Passivated
Insulator	PTFE	

**Packing**

Single or 100