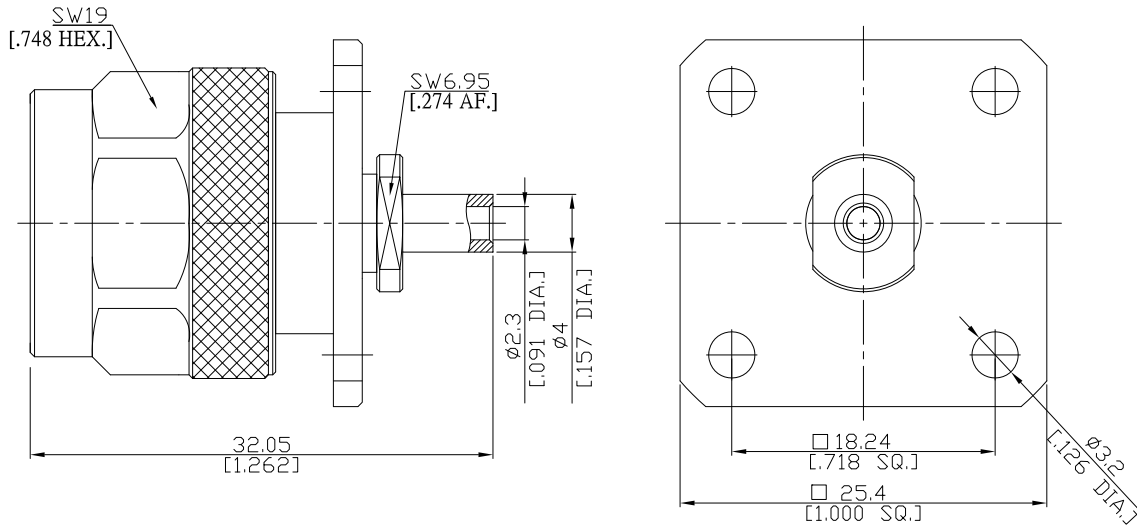




**N Straight 4 Hole Panel Flange  
Cable Plug**

**N1KBF50-0085A/144**



All dimensions are in mm [inch]

**Interface**

According to IEC 60169-16;MIL-C-39012;MIL-STD-348A/304

**Electrical Data**

Impedance 50 Ω  
 Frequency DC to 11 GHz  
 VSWR (Return Loss) ≤ 1.15 (≥ 23.1 dB)  
 Insertion Loss ≤ 0.05  
 Working voltage (at sea level) 1400 V rms

- Limitations are possible due to the used cable type -

**Mechanical Data**

Coupling mechanisms Screw-lock  
 Centre contact Soldered or Crimped  
 Cable entry Solder clamp

**Environmental Data**

Temperature range -65°C to +165°C  
 RoHS compliant

**Material And Plating**

Connector parts	Material	Plating
Centre contact	Brass	Gold plating(Nickel underplated)
Body	Brass	Copper-Tin-Zinc Alloy
Insulator	PTFE	
Gasket	Silicone Rubber	

**Suitable Cables**

RSR-085, RSF-085, RSF-085-FEP, UT 85, RG 405/U, RTK- FS 085, RTK- Flex 405, BELDEN 1671A

**Packing**

Single or 100

**Related Document**

Mounting Dimension MD16