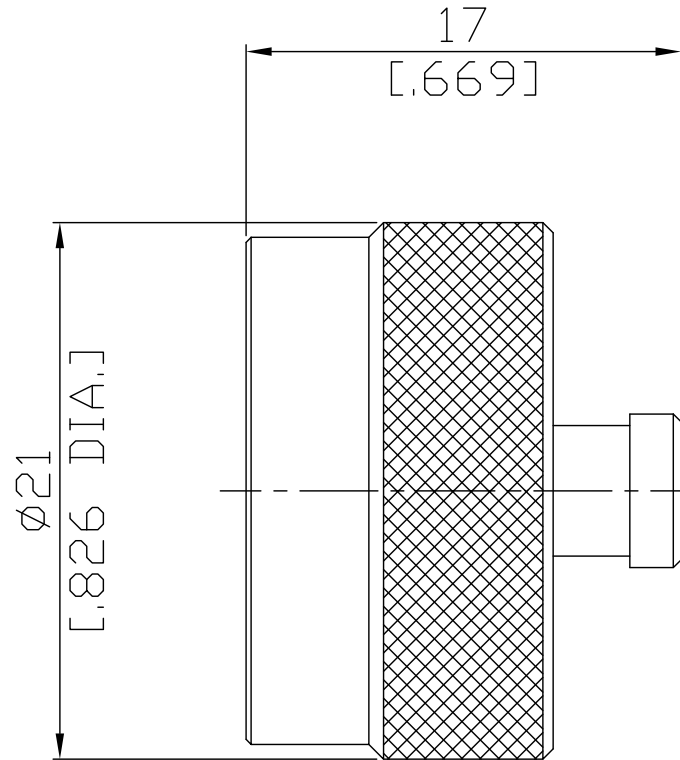


N Straight Protective Cap Plug
N1A00-1700A/-4


All dimensions are in mm [inch]
Tolerances according to DIN ISO 2768-mH

Mechanical Data

Coupling mechanisms Screw-lock
Weight N/A

Environmental Data

Temperature range -65°C to +165°C
RoHS compliant

Material And Plating

Connector parts	Material	Plating
Gasket	Silicone Rubber	
Coupling nut	Brass	Copper-Tin-Zinc Alloy

Packing

Single or 100