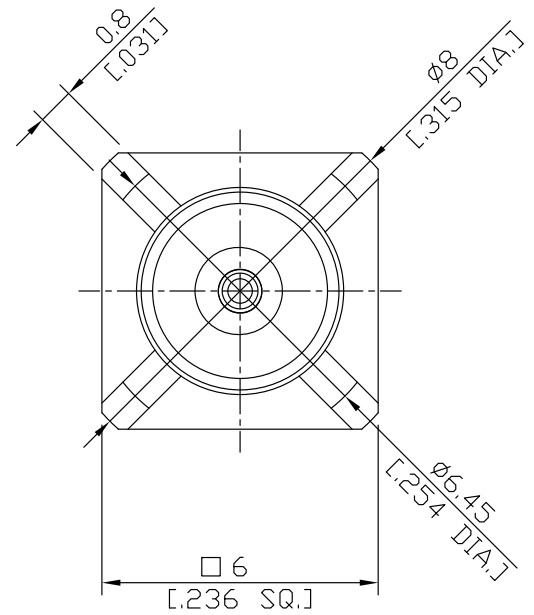
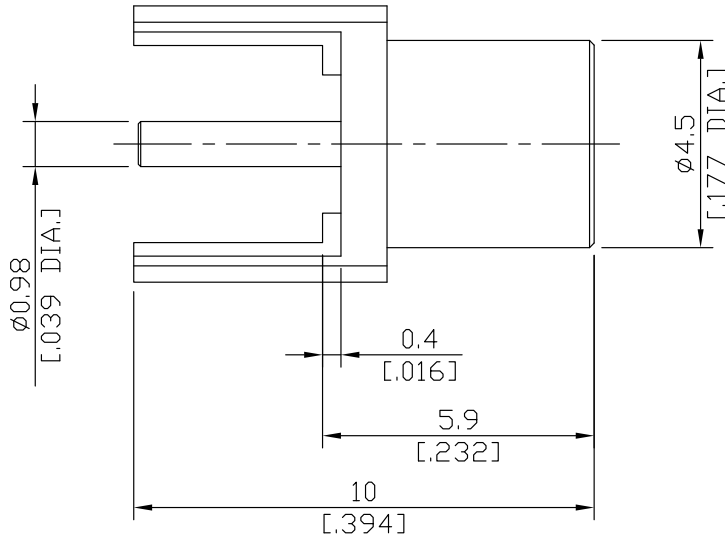


MCX Straight PCB Jack

MCX2I50-1000D/91



All dimensions are in mm [inch]

Tolerances according to DIN ISO 2768-mH

Interface

According to N/A

Electrical Data

Impedance 50 Ω

Frequency DC to 6 GHz

Mechanical Data

Coupling mechanisms Snap-lock

Board mounting type Through Holes

Weight 0.0007 kg

Environmental Data

Temperature range -55°C to +155°C

RoHS compliant

Material And Plating

Connector parts	Material	Plating
Centre contact	Beryllium Copper	Gold plating(Nickel underplated)
Body	Brass	Gold plating(Nickel underplated)
Insulator	PTFE	

Packing

Single or 100

Related Document

Mounting Dimension MD81