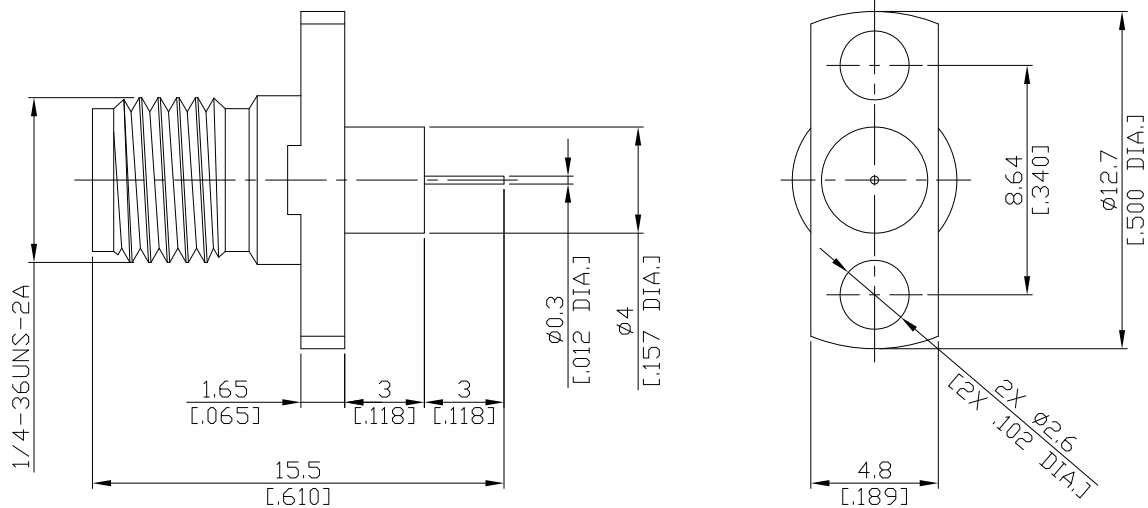


2.92mm Jack (Female) Connector Solder Attachment 2 Hole Flange Mount Stub Terminal, 8.64mm [.340 inch] Hole Spacing, DC-40GHz VSWR1.2

K2GTA50-1550D / 9X



All dimensions are in mm [inch]
Tolerances according to DIN ISO 2768-mH

Interface

Mechanically compatible with 3.5mm, SMA
According to IEC 61169-35, IEEE Std 287-2007

Electrical Data

Impedance 50 Ω
Frequency DC to 40 GHz
VSWR (Return Loss) ≤ 1.20 (≥ 20.83 dB)
Insertion Loss ≤ 0.05 × √F (GHz) dB
Insulation Resistance ≥ 5 GΩ
Test Voltage (at sea level) 750 V rms
Working Voltage (at sea level) 250 V rms
- Return loss in application depends decisive on PCB or cavity design -

Material And Plating

Piece Parts	Material	Plating
Centre contact	Beryllium Copper	Gold plating, 3 μinch (Non-magnetic nickel-phosphorus underplating, 80 μinch)
Body	Stainless Steel	Passivated
Insulator	PEI /PTFE	

2.92mm Jack (Female) Connector Solder Attachment 2 Hole Flange Mount Stub Terminal, 8.64mm [.340 inch] Hole Spacing, DC-40GHz VSWR1.2

K2GTA50-1550D / 9X

Mechanical Data

Coupling Mechanisms	Snap-on
Mating Cycles	≥ 500
Center Contact Captivation	≥ 20 N
Coupling Test Torque 2.92mm	1.70 Nm
Recommended Torque 2.92mm	0.90 Nm

Environmental Data

Temperature Range	-55°C to +165°C
Thermal Shock	MIL-STD-202, Meth. 107, Cond. B
Vibration	MIL-STD-202, Meth. 204, Cond. D
Shock	MIL-STD-202, Meth. 213, Cond. I
Moisture Resistance	MIL-STD-202, Meth. 106
RoHS	compliant

Packing

Single or 100