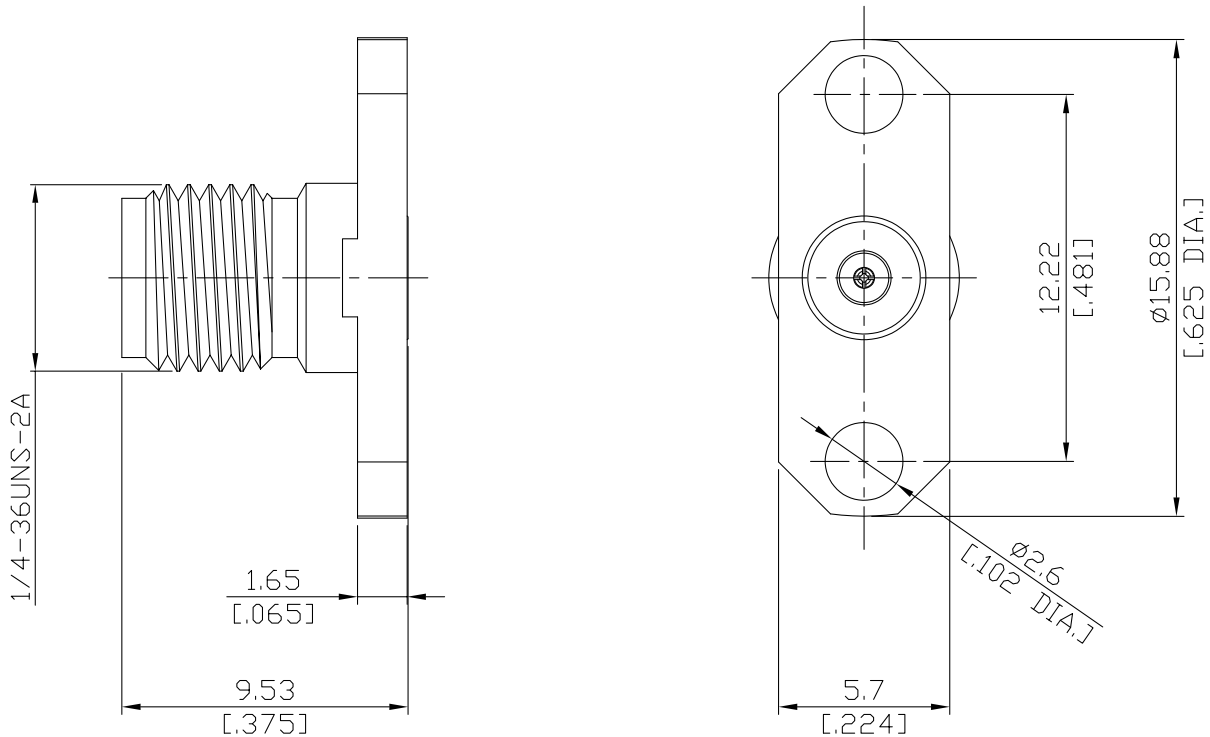


RPC2.92 Straight Field Replaceable Jack

K2BT50-0009A/9X



All dimensions are in mm [inch]
Tolerances according to DIN ISO 2768-mH

Interface
According to IEC 61169-35; MIL-STD-348A

Electrical Data
Impedance 50 Ω
Frequency DC to 40 GHz
VSWR (Return loss) DC to 27 GHz: ≤ 1.10 (≥ 26.44 dB)
27 GHz to 40 GHz: ≤ 1.15 (≥ 23.13 dB)
Insertion loss ≤ 0.3 dB

Mechanical Data
Coupling mechanisms Screw-lock
Weight N/A
Accept Pin 0.23 mm (.009 inch)

Environmental Data
Temperature range -55°C to +165°C
RoHS compliant

Material And Plating

Piece Parts	Material	Plating
Centre contact	Beryllium Copper	Gold plating(Nickel underplated)
Body	Stainless Steel	Passivated
Insulator	PS	

Packing
Single or 100