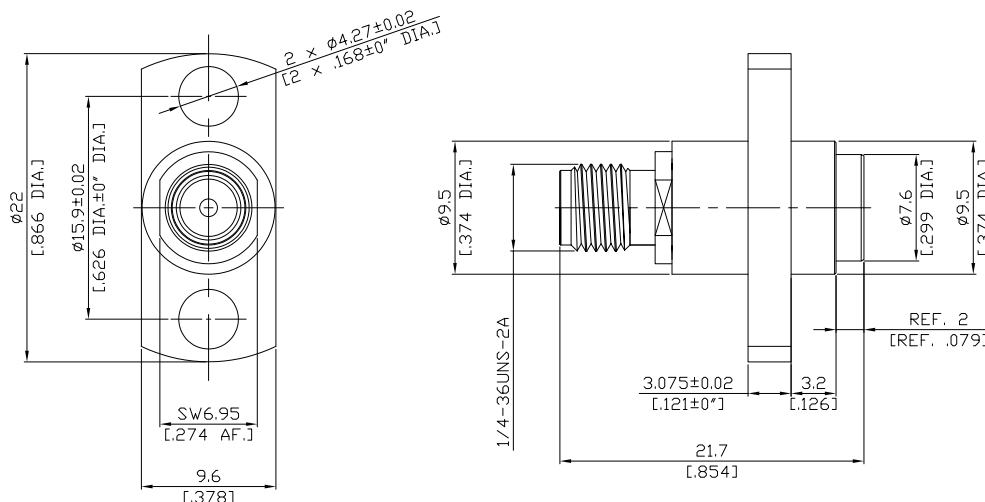




**BMA Jack (Female) to SMA Jack (Female)  
2 Hole Flange Mount Slide-On Adapter**

**AD-A2BA25A-PT/91X-91**



All dimensions are in mm [inch]

Tolerances according to DIN ISO 2768-mH

**Interface**

SMA according to

IEC 60169-15; MIL-STD-348A/310

BMA according to

IEC 61169-33; MIL-STD-348A/321

**Electrical Data**

Impedance

50 Ω

Frequency

DC to 6 GHz

VSWR (Return Loss)

≤ 1.10 (≥ 26.44 dB)

Insertion Loss

≤ 0.2 dB

**Mechanical Data**

Coupling mechanisms

SMA (Screw-lock); BMA (Slide-on)

Weight

N/A

**Environmental Data**

Temperature range

-65°C to +165°C

RoHS

compliant

**Material And Plating**

Piece Parts (SMA)	Material	Plating
Centre contact	Beryllium Copper	Gold plating(Nickel underplated)
Body	Brass	Gold plating(Nickel underplated)
Insulator	PTFE	
Outer contact	Stainless Steel	Passivated
Piece Parts (BMA)	Material	Plating
Centre contact	Beryllium Copper	Gold plating(Nickel underplated)
Body	Brass	Gold plating(Nickel underplated)
Insulator	PTFE	
Spring	Stainless Steel	Passivated

**Packing**

Single or 100

**Related Document**

Mounting Dimension

MD149