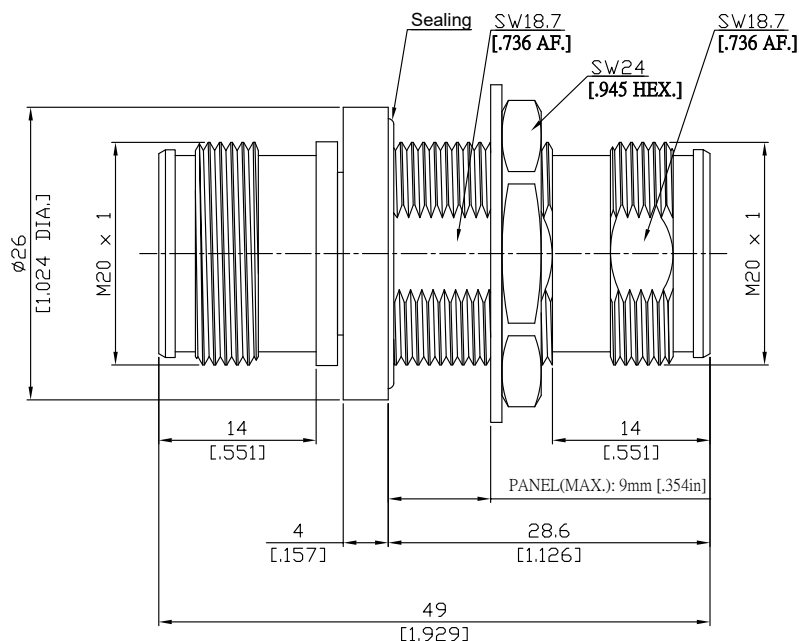
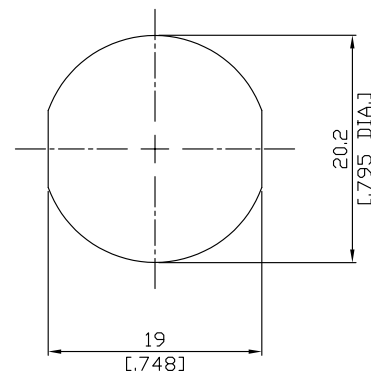


Bulkhead adaptor jack/jack  
4.3-10 jack (female) / 4.3-10 jack (female)

AD-43102431025A-BH/H4-H4



Recommended  
Mounting Dimensions:



All dimensions are in mm [inch]

Tolerances according to DIN ISO 2768-mH

#### Interface

According to IEC 61169-54

#### Electrical Data

Impedance 50  $\Omega$   
Frequency DC to 6 GHz  
VSWR (Return loss)  $\leq 1.15$  ( $\geq 23.13$  dB)  
Insertion loss  $\leq 0.05 \times \sqrt{F}$  [GHz] dB

#### Mechanical Data

Coupling mechanisms Screw-lock  
Weight N/A

#### Environmental Data

Temperature range -65°C to +165°C  
RoHS compliant  
IP rating IP68

#### Material And Plating

Piece Parts (SC)	Material	Plating
Centre contact	Phosphor Bronze	Gold plating(Nickel underplated)
Body	Brass	Copper-Tin-Zinc Alloy
Insulator	PTFE	
Gasket	Silicone Rubber	
Fastening nut	Brass	Copper-Tin-Zinc Alloy
Washer	Brass	Copper-Tin-Zinc Alloy
Piece Parts (SC)	Material	Plating
Centre contact	Phosphor Bronze	Gold plating(Nickel underplated)
Body	Brass	Copper-Tin-Zinc Alloy
Insulator	PTFE	

#### Packing

Single or 100