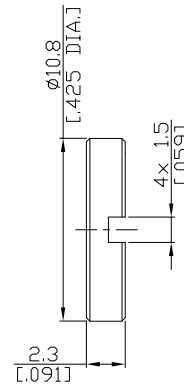
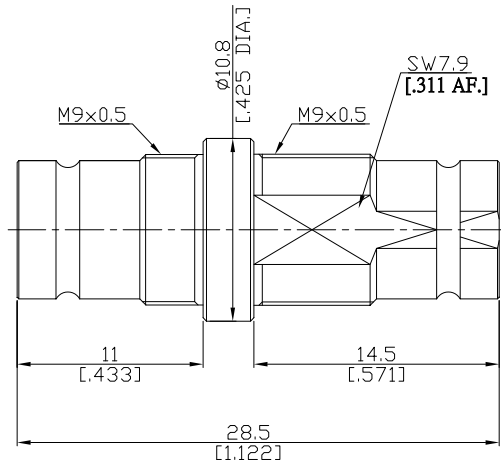
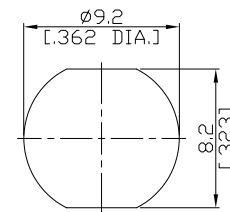


1.6/5.6 Jack (Female) to 1.6/5.6 Jack (Female) Bulkhead Adaptor, 75 Ohm

AD-16562165627A-BH/H3-H3



Recommended Mounting Hole



All dimensions are in mm [inch]

Tolerances according to DIN ISO 2768-mH

Interface

According to IEC 60169-13

Electrical Data

Impedance 75 Ω

Mechanical Data

Coupling mechanisms Screw-lock, snap-on, and slide-in

Weight N/A

Environmental Data

Temperature range -65°C to +165°C

RoHS compliant

Material And Plating

Piece Parts (1.6/5.6)	Material	Plating
Centre contact	Phosphor Bronze	Gold plating(Nickel underplated)
Body	Brass	Nickel
Insulator	PTFE	
Piece Parts (1.6/5.6)	Material	Plating
Centre contact	Phosphor Bronze	Gold plating(Nickel underplated)
Body	Brass	Nickel
Insulator	PTFE	
Fastening nut	Brass	Nickel

Packing

Single or 100