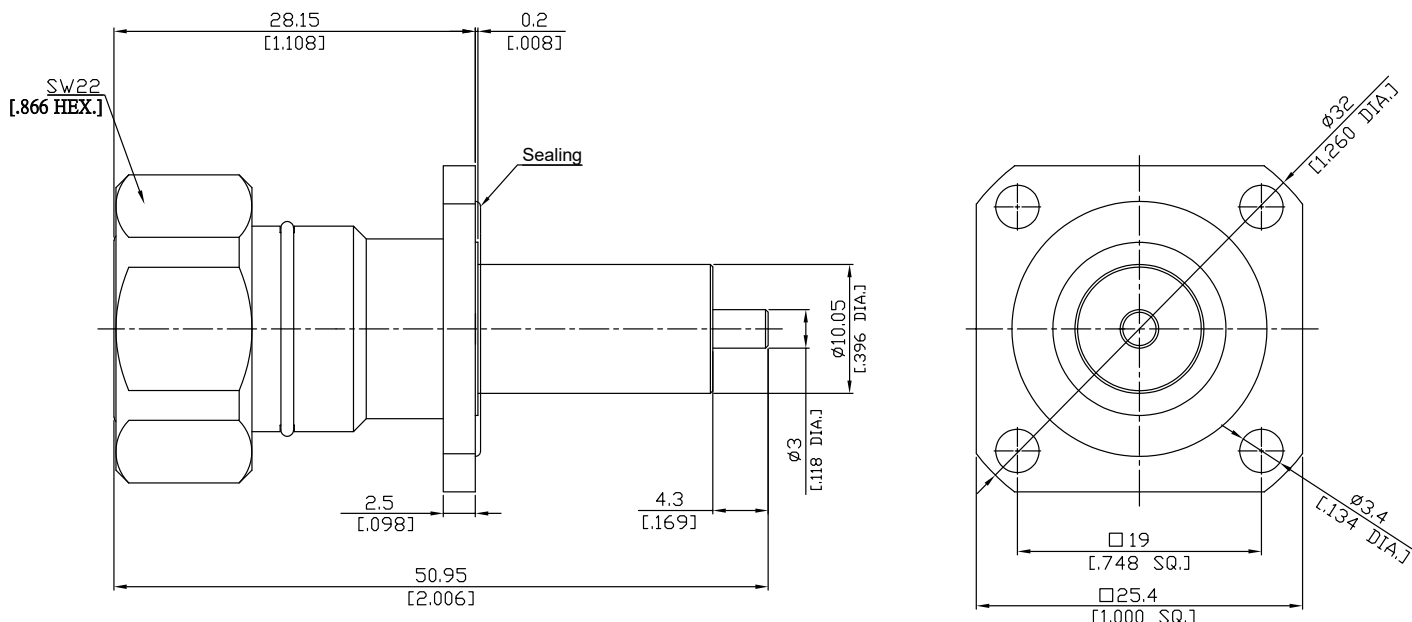


4.3-10 Straight Panel Receptacle Plug
Coaxial End

43101GFA50-5095A/144



All dimensions are in mm [inch]

Tolerances according to DIN ISO 2768-mH

Interface

According to IEC 61169-54

Electrical Data

Impedance 50 Ω
 Frequency DC to 6 GHz
 VSWR (Return loss) ≤ 1.20 (≥ 20.83 dB)
 Insertion loss ≤ 0.1 x √F (GHz) dB

Mechanical Data

Coupling mechanisms Screw-lock
 Weight N/A

Environmental Data

Temperature range -65°C to +165°C
 RoHS compliant

Material And Plating

Piece Parts	Material	Plating
Centre contact	Brass	Gold plating(Nickel underplated)
Body	Brass	Copper-Tin-Zinc Alloy
Insulator	PTFE	
Coupling nut	Brass	Copper-Tin-Zinc Alloy
Gasket	Silicon Rubber	

Packing

Single or 100

Related Document

Mounting Dimension MD156

The facts and figures herein are carefully compiled to the best of our knowledge, but they are intended for general informational purposes only. In the effort to improve our products, we reserve the right to make changes judged to be necessary.

Rev.:	Rosnol RF/Microwave Technology www.rosnol.com ; info@rosnol.com	Page
Date:	Phone: +886-3-463-5095 / Fax:+886-3-463-5952 N-CAGE Code: SFKK0	1/1
19/11/10		